



Flexys 10

Specifications:

Placement head: 1 rotary turret head on XY gantry with 8 pick ups & a 32 position 'smart' nozzle tool bank

Tact time: 0.36 sec – 10,000cph
(IPC: 8,600cph)

Standard Accuracy: 45µm (QFPs) to 75µm (Chip)

Feeder capacity: 128 x 8mm tape positions (120 with trolleys) + Matrix trays

Feeder types:

Tape: 8 – 88mm

Stick

Tray

Specials (labels, solder balls and others on request)



Outstanding value
and flexibility



Protect your investment

Combines all around capability with outstanding value for money, the Flexys-10 is perfect for low to medium-volume, high-mix production. Rated at a significant 10,000 cph and placing 0201s to the largest QFPs on the market, as well as components that cannot be handled by conventional vacuum nozzles, the system incorporates a high level of flexibility rarely found in low-cost solutions.

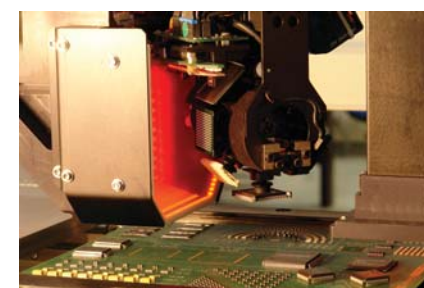
Incorporating a 8 position rotary turret head on an X/Y gantry utilising 'on the fly' vision, it will maintain high placement rates even on boards with a wide range of components.

As with all Europlacer systems the Flexys-10 features unrivalled flexibility including a standard feeder capacity of 128 x 8mm tapes in addition to an area for matrix trays. Boards are automatically handled by an in-line pass through, or single-end 'hand' load conveyor options. Other options include a fixed camera for very large, odd-form or very fine pitch devices, adhesive dispense, electrical verification and a 30 position matrix tray sequencer.

- ▶ Protection of investment
- ▶ Integrated intelligence
- ▶ Feeders and software fully compatible on all Europlacer's range
- ▶ 3D^{PS}



Stand alone or In-line solution, with or without trolley



The Flexys-10 incorporates Europlacer's innovative intelligent feeder technology enabling rapid product set-up and changeover as well as advance warning of component run outs to help maintain high efficiency production. This includes the ability to load feeders anywhere on the machine which automatically recognises them and optimising the program accordingly, a very useful feature particularly for small batch runs.

'Smart' nozzles can be placed anywhere in the 32 position nozzle bank adding to overall efficiency.

Machines include the innovative Adaptive Positioning System called 3D^{PS} that is used to optimise picking and placement of components. During picking sequence, the system compensates in X, Y and altitude eliminating the need for manual picking adjustments. 3D^{PS} system compensates for board bow and twist on placement. Placement height is adjusted to reflect a similar board height to adjacent components. The placement force is optimum, even on a warped PCB.

Machine runs under a Microsoft Windows® programming and operating environment. Machine's advanced performance is augmented by a range of sophisticated user friendly graphical software packages including line control balancing, management information reports and Total Traceability™.

Flexys is an extremely competitive solution for a wide range of low to medium volume assembly requirements

