



Huge area for 10 JEDEC trays on the single head machine, without reducing the feeder capacity



Area for 3 JEDEC trays on the dual heads machine, without reducing the feeder capacity

The system can accommodate up to 264 x 8 mm tape positions and, in addition, an internal waffle tray zone allows for up to 10 JEDEC trays on the single head version and 3 JEDEC trays on the dual head version. **iineo** can also be equipped with one or two 30-channel waffle tray sequencers. Sequencer can be swapped with a tape trolley or a feeder trolley in less than a minute.



iineo

Common specifications:

Feeder types:
Tape: 8 - 88mm
Stick
Tray
Specials (labels, solder balls and others on request)

Possible options:

1 or 2 heads
Standard or long pcb's
Standard or wide pcb's
Very long / wide pcb's
Glue dispenser
Time pressure or archimedian screw in option
Temperature regulation
Electrical test accessible by both heads
Fixed camera accessible by both heads
Conveyor auto width adjustment
Additional nozzle magazine (1 head)
Special nozzle magazine
Display and keyboard at the rear

Type	Nbr. of head	Tornado head	Board size (mm)	Board size with sequencer at the rear (mm)	Nbr. of 8mm pos.	Matrix zone (mm)	equiv. Jeduc	Tray sequencer	Max. placement rate
iineo 1	1	No	700 x 460	700 x 405	264	1000 x 490	10	Front or Rear	14 000 cph
iineo 1-T	1	Yes	700 x 460	264	1000 x 490	10	No	No	15 500 cph
iineo 1-W	1	No	700 x 600	132	1000 x 490	10	Front	No	14 000 cph
iineo 1TW	1	Yes	700 x 600	132	1000 x 490	10	No	No	15 500 cph
iineo 1-L	1	No	1000 x 460	1000 x 405	264	550 x 490	7	Front or Rear	14 000 cph
iineo 1TL	1	Yes	1000 x 460	264	550 x 490	7	No	No	15 500 cph
iineo 1-LW	1	No	1000 x 600	132	550 x 490	7	Front	No	14 000 cph
iineo 1-LW	1	Yes	1000 x 600	132	550 x 490	7	No	No	15 500 cph
iineo 1-VL	1	No	1610 x 460	1500 x 405	264	no	no	Front or Rear	14 000 cph
iineo 1TVL	1	Yes	1610 x 460	264	no	no	no	No	15 500 cph
iineo 1-VLW	1	No	1610 x 600	132	no	no	no	Front	14 000 cph
iineo 1TVLW	1	Yes	1610 x 600	132	no	no	no	No	14 000 cph
iineo 2	2	No	500 x 460	500 x 405	264	460 x 325	3	Front or Rear	26 000 cph
iineo 2T	2	1	500 x 460	500 x 405	264	460 x 325	3	Front or Rear	27 300 cph
iineo 2T	2	2	500 x 460	264	460 x 325	3	No	No	28 600 cph
iineo 2-W	2	No	500 x 600	132	460 x 325	4	Front	No	26 000 cph
iineo 2TW	2	1	500 x 600	132	460 x 325	4	No	No	27 300 cph
iineo 2TW	2	2	500 x 600	132	460 x 325	4	No	No	28 600 cph
iineo 2-L	2	No	700 x 460	700 x 405	264	no	no	Front or Rear	26 000 cph
iineo 2TL	2	1	700 x 460	700 x 405	264	no	no	Front or Rear	27 300 cph
iineo 2TL	2	2	700 x 460	264	no	no	no	No	28 600 cph
iineo 2-LW	2	No	700 x 600	132	no	no	no	Front	26 000 cph
iineo 2-LW	2	1	700 x 600	132	no	no	no	No	27 300 cph
iineo 2-LW	2	2	700 x 600	132	no	no	no	No	28 600 cph

eurolacer

Blakell Europlacer Ltd
30 Factory Road
Upton Industrial Estate
Poole, Dorset
BH16 5SL
UK
Tel +44 (0)1202 266600
Fax +44 (0)1202 266599
Email: sales@europlacer.co.uk

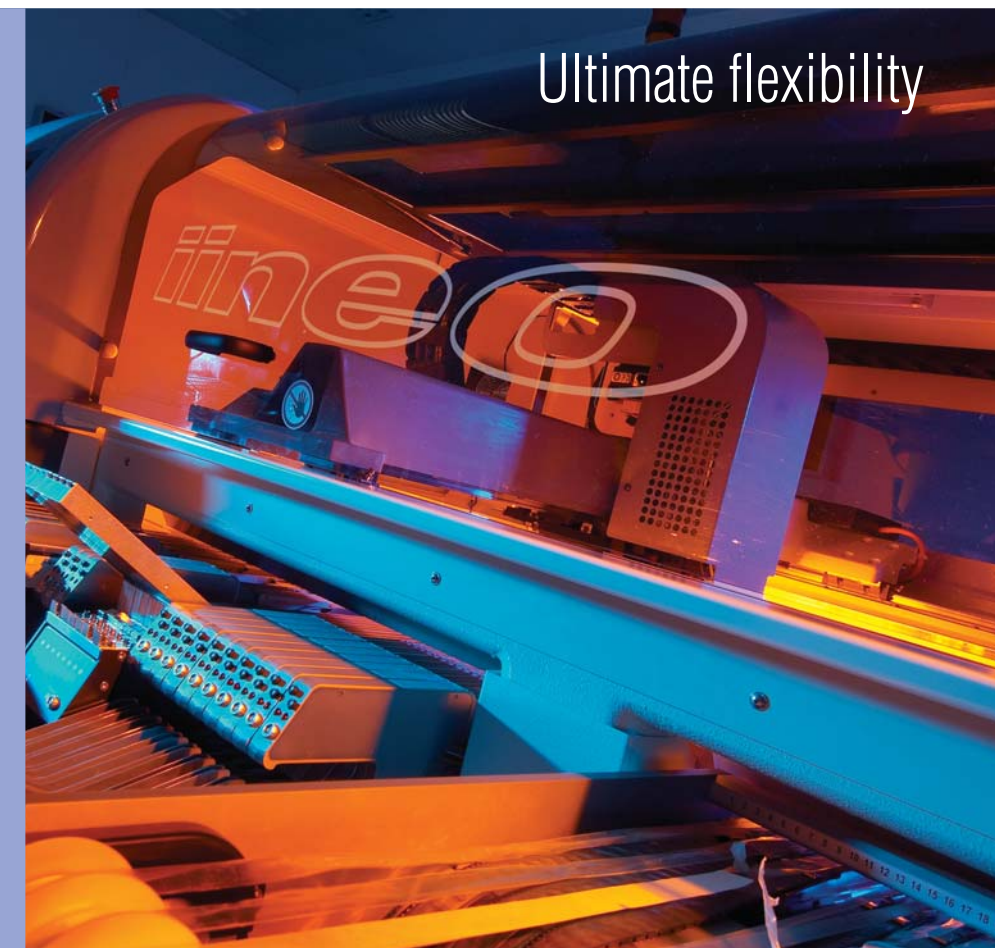
Europlacer Industries SAS
Route de Cholet
85620 Rocheservière
France
Tel +33 (0) 2 5131 0303
Fax +33 (0) 2 5106 5612
Email: contact@europlacer.fr

Europlacer North America
2521 Schieffelin Road, Suite 102
Apex, NC 27502
USA
Tel +1 919 362 8623
Fax +1 919 362 8628
Email: sales@europlacer-na.com

Europlacer (Shanghai) Co., Ltd
Unit 2207 Floor 2 Building B
No. 51 Rijing Road
Shanghai Waigaoqiao
Free Trade Zone
PR. CHINA 200131
Tel +86 21 5868 3500
Fax +86 21 5868 3700
Email: contact@europlacer.cn

www.europlacer.com

As part of our policy of continuous development, specifications are subject to change without prior notice.



Ultimate flexibility

iineo

integrated intelligence



Ready for tomorrow's challenges

The striking *iineo* platform features many improvements to the Europlacer machine range, such as an extremely high feeder count, largest industry board size and increased maximum component height. The platform uses Europlacer's unique Integrated Intelligence™ plus proven core features <highly robust and flexible turret head, intelligent feeders, 3D^{PS}, powerful software tools> while introducing new technologies with linear motors and digital cameras.

- ▶ Very high feeder count (264 x 8mm)
- ▶ Huge pcb size (up to 1610 x 600mm)
- ▶ Linear motors
- ▶ Digital cameras
- ▶ User Friendly Graphical User Interface
- ▶ Outstanding productivity
- ▶ On the fly vision
- ▶ Smart nozzles
- ▶ 3D^{PS}
- ▶ Feeders and software fully compatible across all Europlacer machines



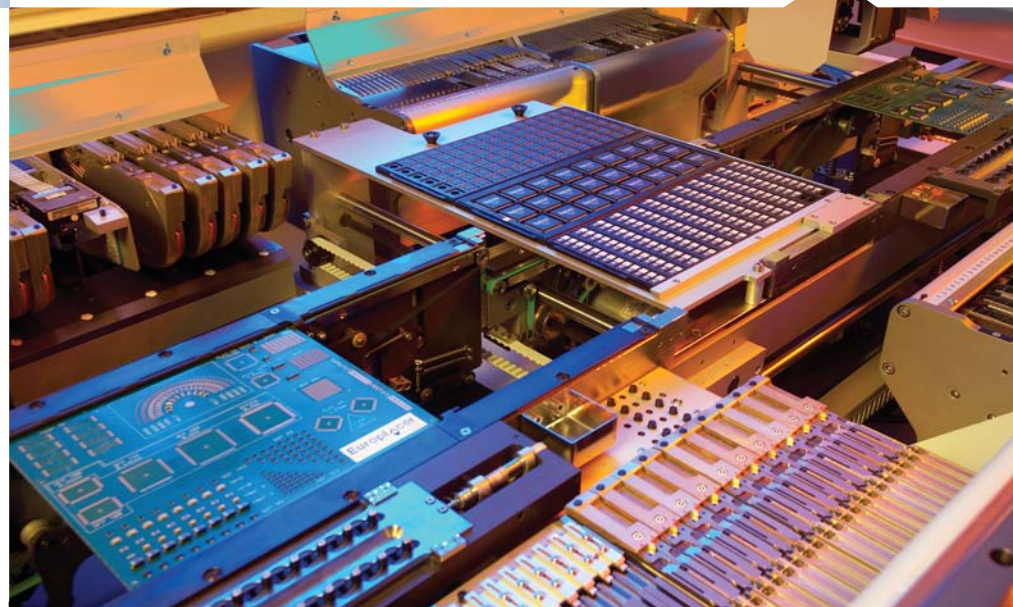
Placement head(s) are fitted with rotary turret head(s) with 8 or 12 pick ups.

Options include glue dispense with or without Archimedean screw, electrical test, fixed camera for large components, conveyor auto-width adjustment, special nozzle magazine, TornadoT head, multi-program optimisation, Production monitoring software (PROMON), intelligent belt feeders for high speed feeding from sticks and much more.

A core objective of the Europlacer concept has always been to protect the investment of its users by seeking upward and downward compatibility of feeders, software, and other ancillaries. This principle also has been applied to the *iineo* SMT platform. It means that current users are able to utilise their existing feeder inventory thereby protecting investment, reducing the configured cost of a new system and ultimately reducing the cost per placement.

Europlacer's truly intelligent feeder technology is used across the whole range of its SMT placers. Whether using quick-load single feeders or full feeder trolley changeover every feeder is fully programmable with component and inventory data. Once the feeders are loaded, this information is automatically recognised by the machine, which helps make setup and changeover fast and simple.

iineo allows 24 different possible configurations



iineo is widely configurable, allowing for 24 different machine possibilities:

- Single or dual linear motor gantries including a rotary turret head with 8 or 12 pickup nozzles
- 1 or 2 board positioning mechanisms
- Oversized board options
- Feeders in front and rear, or front only.

Depending on the configuration:

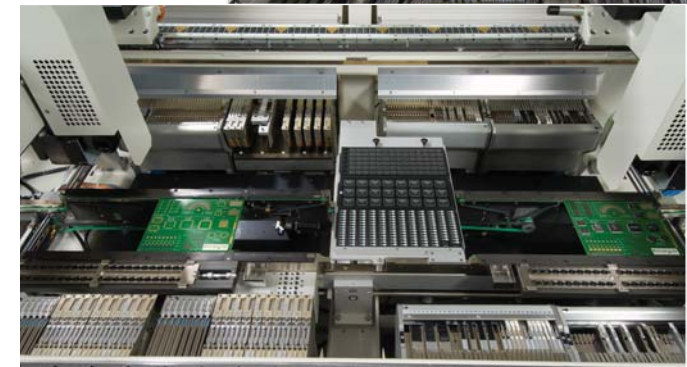
- Tact time can be from 0.128s to 0.257s giving maximum placement rates between 14,000 and 28,000 cph
- Largest PCB size can reach 1610 x 600 mm
- Component range is from 01005 to 70 x 70 mm
- Tallest component can be up to 35 mm height.

The *iineo* platform allows a wide and clear one or two head configuration.

iineo can be accompanied by the latest innovative software such as the multi-job optimisation that determines one set-up for multiple job processing. Because of the high feeder count available, this software option eliminates frequent changeover, optimising delivery and quality performance.



iineo I



iineo II

Key configuration options:

- 5 possible head configurations
- 8 possible board sizes up to 1610 x 600mm
- Up to 264 positions 8mm
- Integrated Intelligence
- 3D^{PS}

Key benefits:

- large part inventory on the machine
- massive range of board size facilitates extensive multi-panelling, LED arrays and backplanes
- "silent running", low maintenance axis operation
- highly optimised HMI
- Ultimate flexibility and adaptability